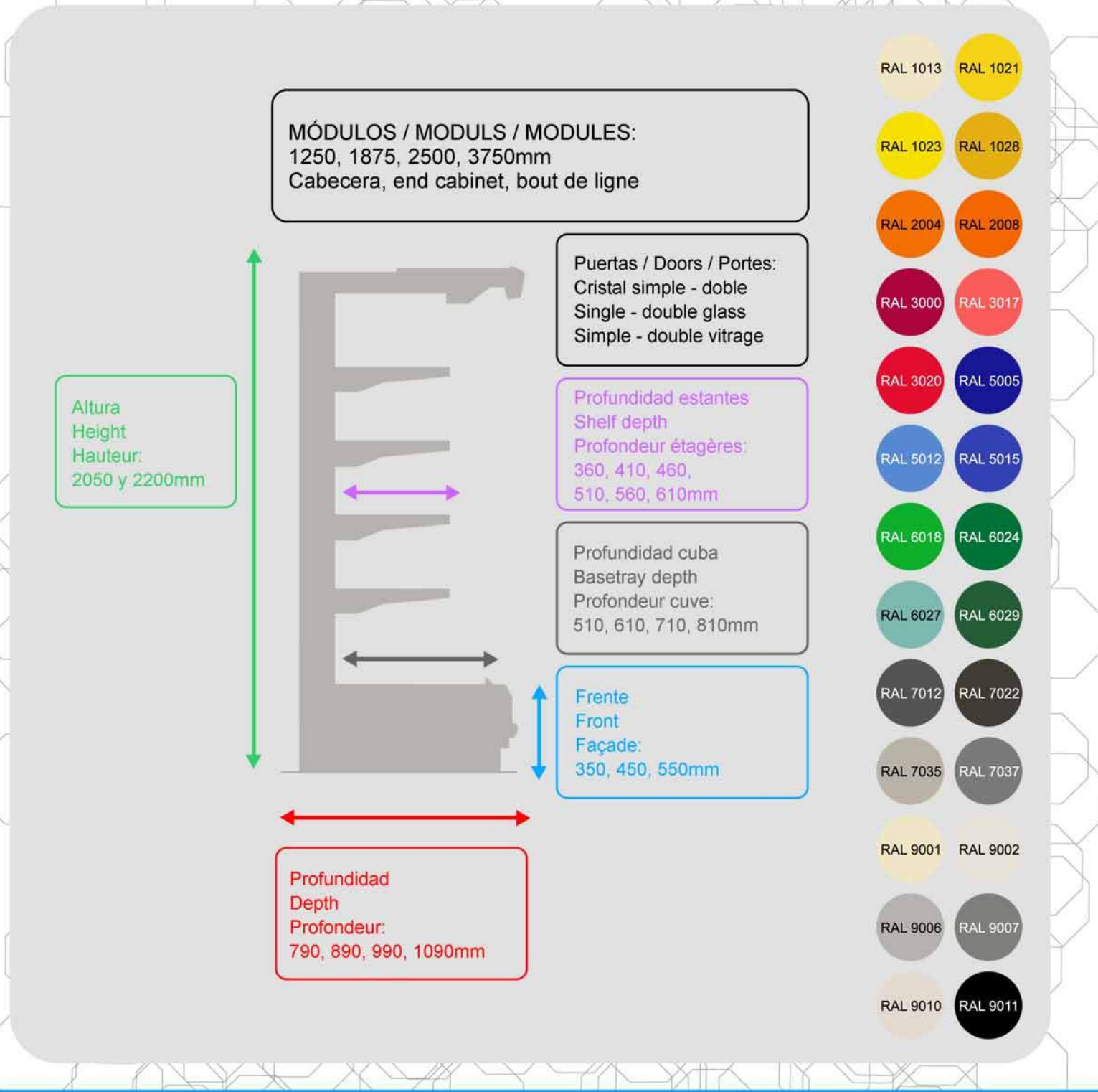


DATOS MERCHANDISING / DATA / DONNEES



EXPOSICIÓN Y CONSERVACIÓN DE ALIMENTOS, S.A.

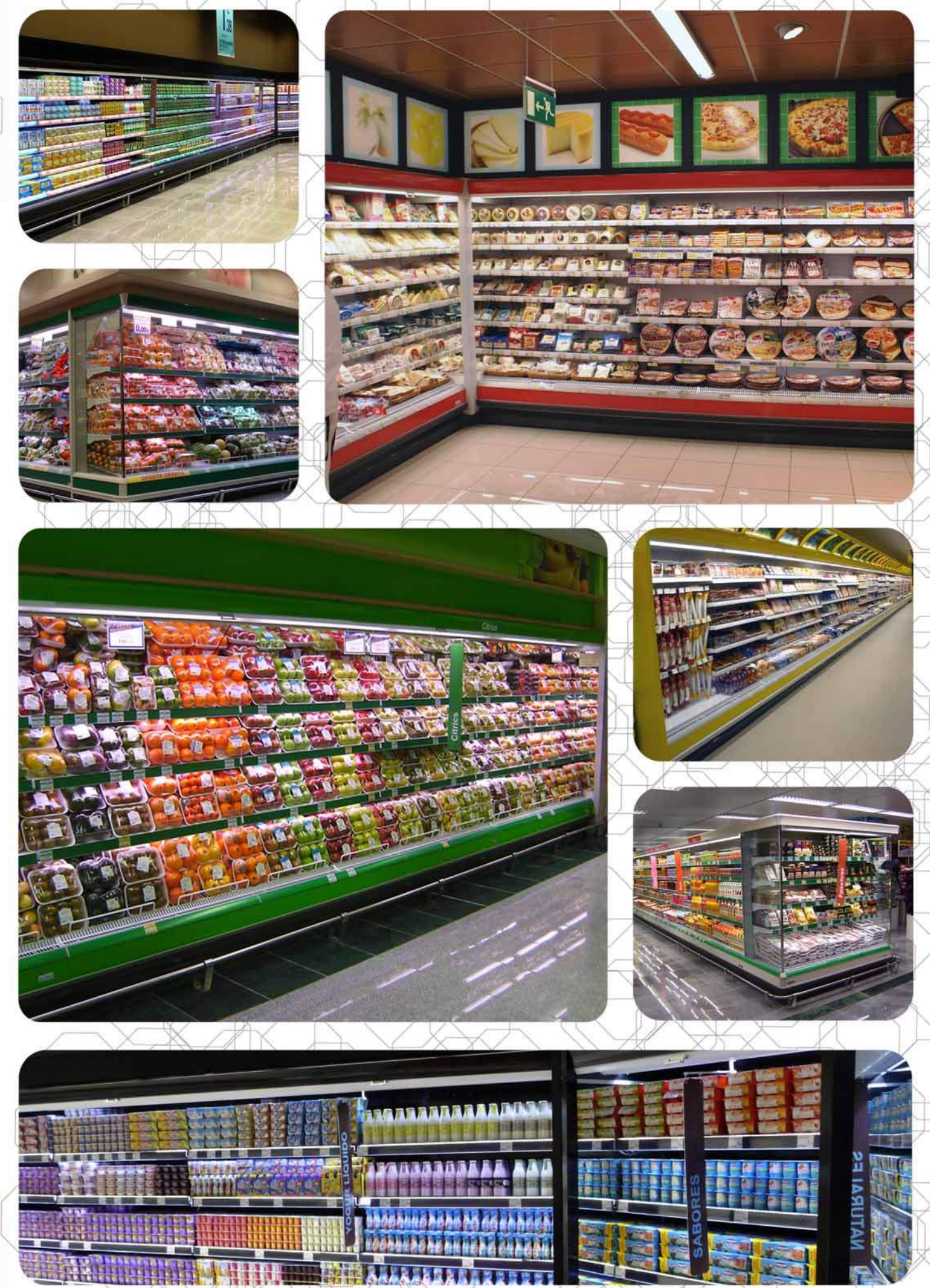
輝和陳列設備有限公司
Fixwell Display System Co., Ltd.

Hong Kong Representative:
Fixwell Display System Co., Ltd
Unit 1401, Westlands Centre,
20 Westlands Road, Quarry Bay, Hong Kong.
tel.: +852 2811 9381
e-mail: sales@fixwell.com.hk
http://www.fixwell.com.hk



MURALES
MULTIDECKS
VERTICAUX

ALPES



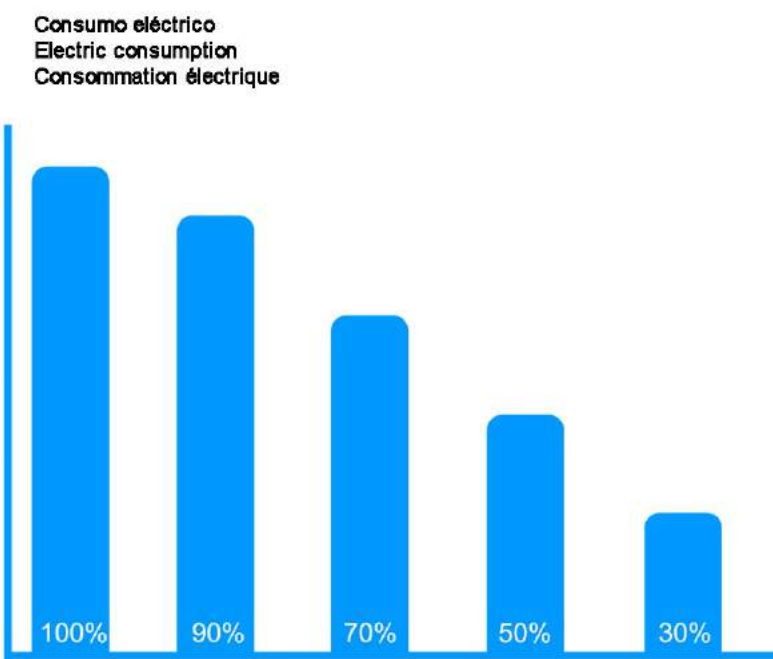
DESCRIPCIÓN GAMA
range description
description de la gamme

La gama de murales ALPES destaca por sus ahorros energéticos, tecnología y flexibilidad / ALPES multidecks range is characterized by its energy savings, technology and flexibility / La gamme des verticaux ALPES se caractérise par ses économies d'énergie, sa technologie et sa flexibilité:

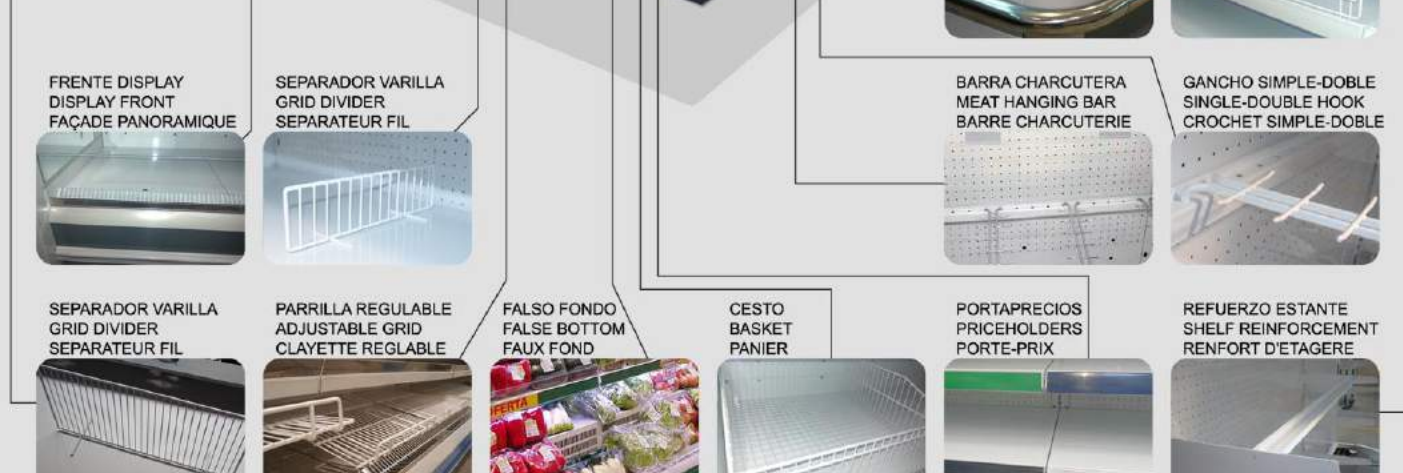
- Alta eficiencia energética / High energy efficiency / Haute efficacité énergétique.
- Fácil recuperación y reciclaje al final de su vida útil / Easy recycling / Récupération et recyclage aisés en fin de vie.
- Mínimo costo ciclo de vida / Minimum life cycle cost / Coût minimum sur le cycle de vie.
- Fácil de montar, ensamblar, instalar y limpiar / Easy assembly, installation and cleaning / Facilité de montage, d'assemblage, d'installation et de nettoyage.
- Múltiples opciones y accesorios / Different options and accessories / Multiples options et accessoires.
- Personalización de colores / Colors customizing / Personnalisation couleurs.
- Diferentes temperaturas / Different temperatures / Gamme de températures.
- Gama SOSTENIBLE SV / Sustainable range SV / Gamme durable SV.

TÉCNICA - CONTROL - EFICIENCIA
TECHNIQUE - CONTROL - EFFICIENCY
TECHNIQUE - CONTRÔLE - EFFICACITÉ

Cortina de aire multivelocidad
Multi-speed air curtain
Plusieurs vitesses rideau d'air



ACCESORIOS Y OPCIONES
Accessories and options
Accessoires et options



SECCIONES
LAYOUTS
SECTIONS

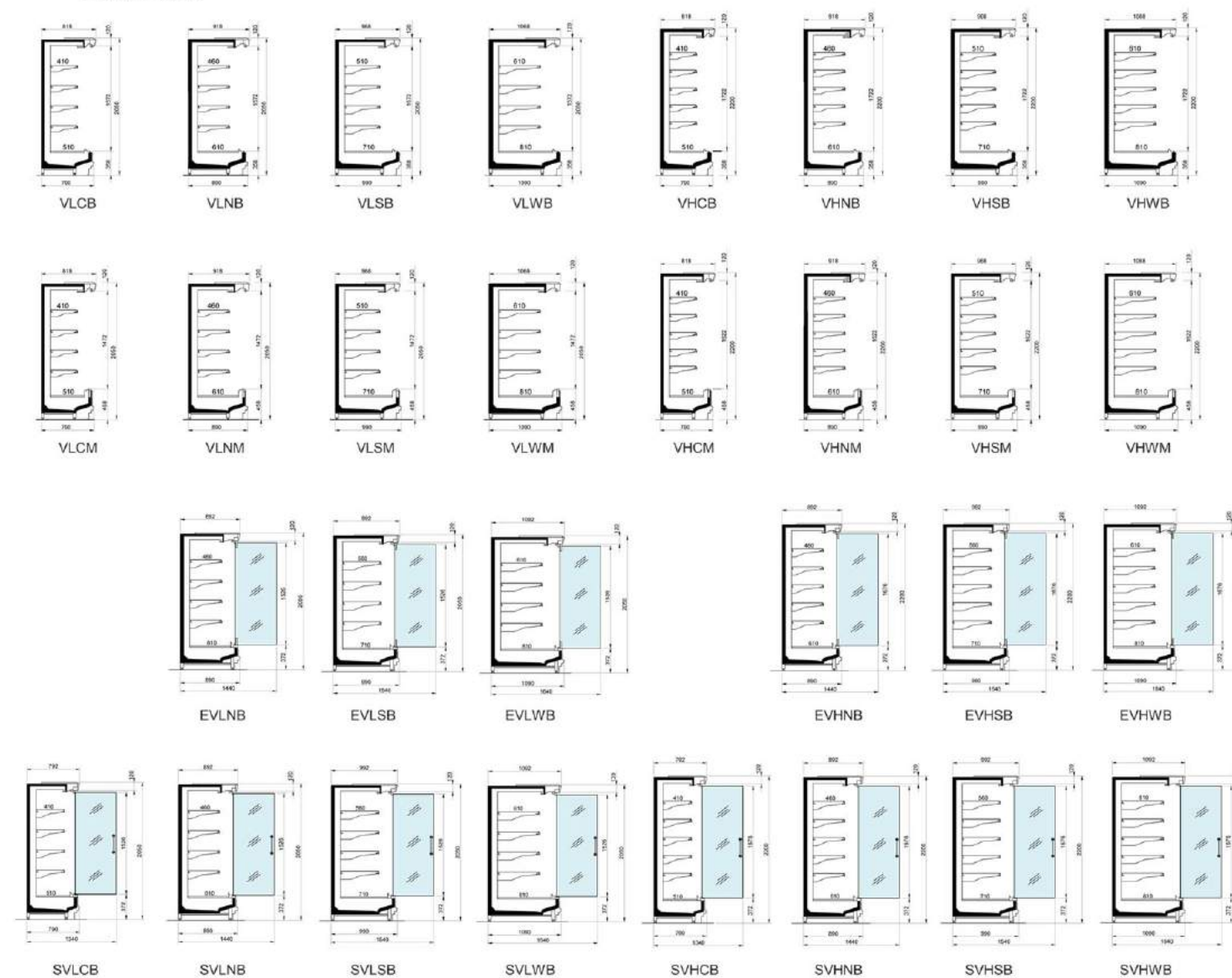
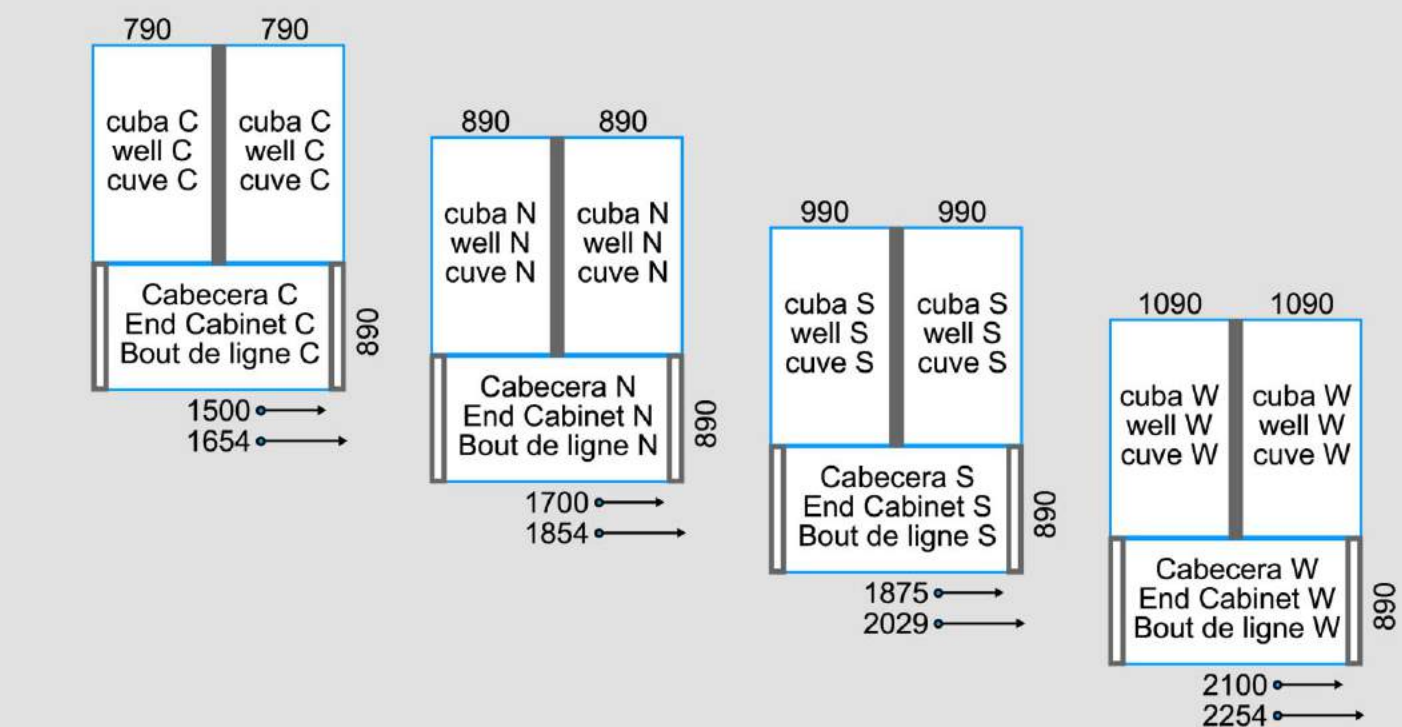


TABLA DE MODULACIONES
MODULAR TABLE
TABLE DES MODULATIONS

Tipo de cuba Basetray type Type de cuve	Profundidad de mueble Cabinet depth Profondeur sol	Modulación sin laterales (mm) Modulations w/o end panels (mm) Modulations sans joues (mm)			
		(2)	(3)	(4)	(6)
C (510 mm)	790 mm	●	●	●	●
N (610 mm)	890 mm	●	●	●	●
S (710 mm)	990 mm	●	●	●	●
W (810 mm)	1090 mm	●	●	●	●

CONFIGURACIÓN CABECERAS
end cabinet configurations
configuration bout de ligne



DATOS TÉCNICOS
TECHNICAL DATA
FICHE TECHNIQUE

Módulo / module	2	3	4	6	C / N / S / W	TDA (m³)							
						VLCB	VLCM	2	3	4	6		
Longitud / Length / Longueur (mm)	1250	1875	2500	3750	1500 / 1700 1875 / 2100	1.83	1.74	2.75	2.61	3.66	3.48	5.49	5.22
Espejor L/OLE / Thickness blind/mirror / Epaisseur opaque/miroir (mm)	42	42	42	42	42	1.86	1.77	2.79	2.66	3.72	3.54	5.59	5.31
Espejor LP+moldura / Thickness display+bumper / Epaisseur display+moulage (mm)	50+27	50+27	50+27	50+27	50+27	1.92	1.83	2.89	2.75	3.85	3.67	5.77	5.50
Volumen neto / Net volume / Volume net (l)	VLC	SVLC	756	1134	1512	2268	1029						
	VLN	EVLN	SVLN	858	1286	1715	2573	1166					
	VLS	EVLS	SVLS	970	1455	1940	2910	1286					
	VLW	EVLW	SVLW	1140	1710	2280	3420	1440					
	VHC	SVHC	812	1218	1624	2436	1107						
	VHN	EVHN	SVHN	923	1384	1845	2768	1255					
	VHS	EVHS	SVHS	1036	1554	2072	3109	1384					
	VHW	EVHW	SVHW	1225	1838	2450	3675	1550					
	VLC	SVLC	2.69	4.03	5.37	8.06	3.22						
Área refrigerada / Refrigerated area / Zone réfrigérée (m²)	VLN	EVLN	SVLN	3.06	4.59	6.13	9.19	4.17					
	VLS	EVLS	SVLS	3.44	5.16	6.87	10.31	5.16					
	VLW	EVLW	SVLW	4.06	6.09	8.13	12.19	6.83					
	VHC	SVHC	3.20	4.80	6.40	9.60	3.84						
	VHN	EVHN	SVHN	3.64	5.46	7.28	10.91	4.95					
	VHS	EVHS	SVHS	4.08	6.11	8.15	12.04	6.11					
	VHW	EVHW	SVHW	4.83	7.24	9.65	14.48	8.11					
	Temperatura de aplicación / Running temperature / Température d'application	-1 / +1°C (1)		0 / +2°C (2)									
	Condiciones ambientales / Ambient conditions / Conditions ambiantes	Clase / Class / Classe 3 (25°C - 60% H.R.)											
						1.31	1.96	2.61	3.24	3.92			
						1.35	2.03	2.71	3.46	4.06			
						1.35	2.03	2.71	3.46	4.06			
						1.40	2.10	2.80	3.50	4.20			
						1.41	2.11	2.82	3.53	4.23			
						1.46	2.18	2.91	3.67	4.37			
						1.46	2.18	2.91	3.67	4.37			
						1.50	2.25	3.00	3.75	4.51			